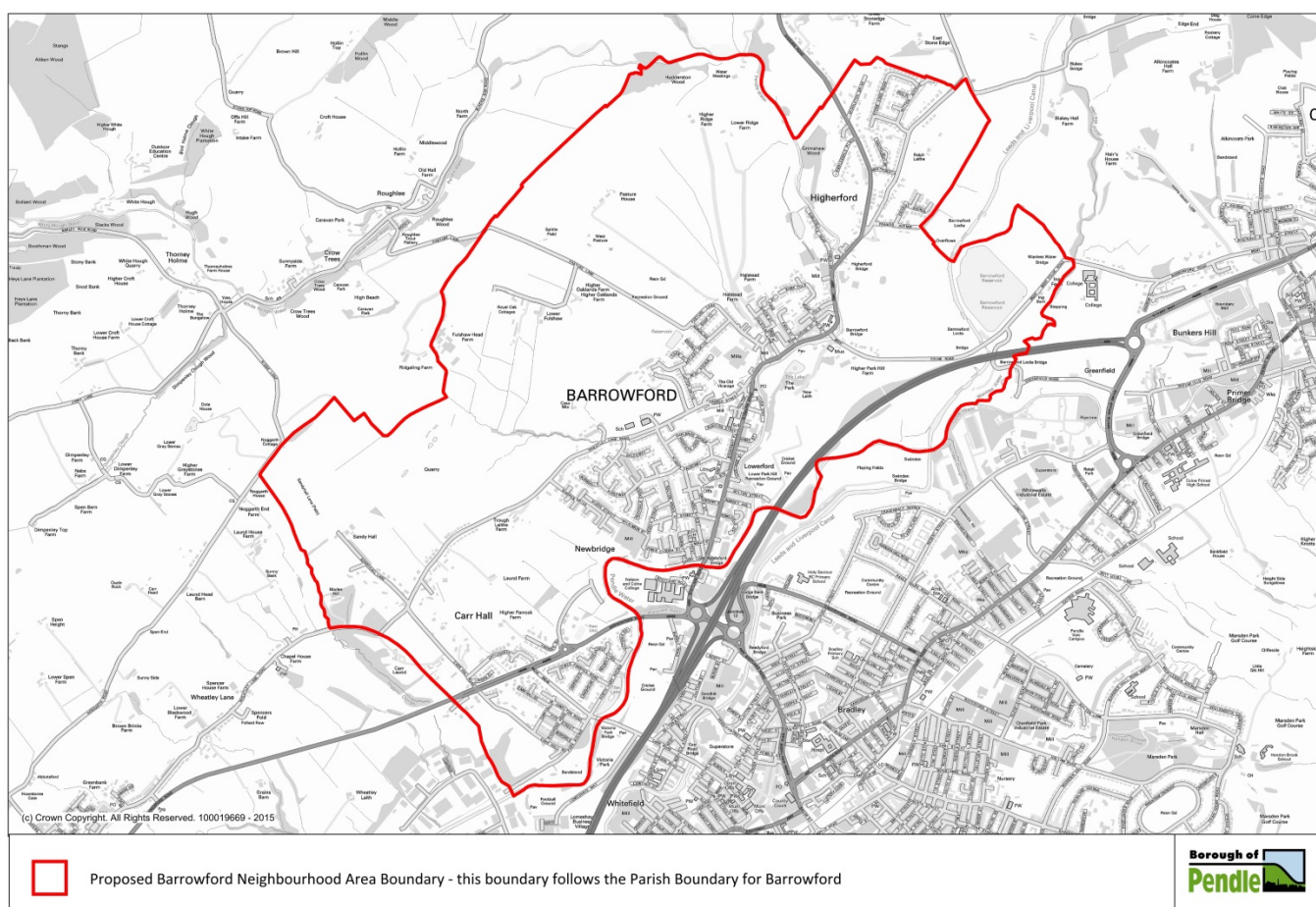


DESIGNATION OF BARROWFORD NEIGHBOURHOOD PLAN AREA

NOTICE IS HEREBY GIVEN that Pendle Council has, in accordance with The Neighbourhood Planning (General) Regulations 2012 and section 61G of the Town and Country Planning Act 1990 as amended, formally designated Barrowford Parish as a neighbourhood area (see map below) and recognised Barrowford Parish Council as the relevant body for the purposes of neighbourhood planning.



In accordance with Regulation 7(1) these details have been published on the Council's website and are available to view at the following venues during their normal opening hours:

- Number One Market Street, Nelson
- Barrowford Parish Council Office, Holmefield House, Barrowford
- Barrowford Public Library, Ann Street, Barrowford